

d [mm]	d- 公差 [mm]	D [mm]	L(h13) [mm]
16	+0.102 +0.032	20	16
18		20	15
		20	20
		20	25
20	+0.124 +0.040	22	12
		22	15
		22	28
		23	10
		23	15
		23	20
		23	23
		23	25
		25	15
		25	15
22	+0.124 +0.040	25	20
		25	25
		25	30
25	+0.124 +0.040	28	10
		28	12
		28	15
		28	20
		28	25
		28	30
28	+0.124 +0.040	29	25
		30	25
		32	20
30	+0.124 +0.040	32	25
		32	30
		34	20
		34	25
		34	30
		34	40

d [mm]	d- 公差 [mm]	D [mm]	L(h13) [mm]
32	+0.150 +0.050	36	20
		36	23
		36	25
		36	30
		36	40
35	+0.150 +0.050	39	15
		39	20
		39	25
		39	30
		39	40
		39	50
40	+0.150 +0.050	44	20
		44	30
		44	40
45	+0.150 +0.050	44	50
		50	30
		50	40
50	+0.150 +0.050	50	50
		55	10
		55	20
		55	30
		55	40
54	+0.180 +0.060	55	50
60		56	30
70		65	50
80		75	50
85	+0.072/+0.212	85	40
125	+0.143	90	40
150	+0.043	130	60
		155	60

*d 公差为压入标准 H7 座孔 (ISO3547-1) 后公差

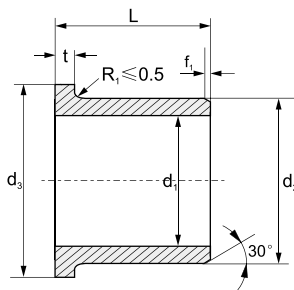


Order 订购

Catalog No. 目录号

7021 . 008 . 010 . 010
7022 . 008 . 010 . 010
7023 . 008 . 010 . 010
7024 . 008 . 010 . 010

翻边轴套



推荐安装公差座孔 : H7
轴 : h9

d	f
1-6	0.3
6-12	0.5
12-30	0.8
>30	1.2

7021~7024-F

Standard Specifications

标准规格



d ₁ [mm]	d ₁ - 公差 [mm]	d ₂ [mm]	d ₃ [d13] [mm]	L[h13] [mm]	t _{0.14} [mm]		
3	+0.054 +0.014	4.5	7.5	3	0.75		
				5	0.75		
4	+0.068 +0.020	5.5	9.5	3	0.75		
				6	0.75		
5		7	11	3	1		
				4	1		
6		8	12	5	1		
				4	1		
		5		1			
		4		1			
		5		1			
		6		1			
8	+0.083 +0.025	10	15	5	1		
				6	1		
				7	1		
				9	1		
				10	1		
				14	1		
		12	15	12	12	1	
					15	1	
					18	1	
					17	1	
9		12	18	16	1		
				10	2		
				5	1		
				6	1		
				7	1		
				8	1		
				9	1		
				10	1		
	15			1			
	17			1			
10	+0.071 +0.013	16	18	12	2		
				18	2		
				10	2		
				4	1		
				5	1		
				6	1		
				7	1		
				9	1		
				10	1		
				12	1		
12	+0.102 +0.032	14	20	4	1		
				5	1		
				6	1		
				7	1		
				9	1		
				10	1		
				12	1		
				13	1		
				15	1		
				17	1		
				18	1		
				20	1		
		16	+0.016/+0.086	17	20	4	1
						5	1
						12	2
						17	1
						20	2
						12	2
13	+0.032/+0.102	18	20	25	1		
				40	2		
				10	2		
				12	2		

d ₁ [mm]	d ₁ - 公差 [mm]	d ₂ [mm]	d ₃ [d13] [mm]	L[h13] [mm]	t _{0.14} [mm]		
14	+0.102 +0.032	16	22	5.2	1		
				8	1		
				10	1		
	+0.086 +0.016		20	12	1		
				17	1		
				6	2		
15	+0.102 +0.032	18	22	15	2		
				20	2		
				20	2		
				20	5		
				23	9		
				20	12		
		17	23	12	1		
				15	1		
				17	1		
				20	1		
				18	12		
				17	25		
16	+0.086 +0.016	18	24	12	1		
				17	17		
				22	2		
		20	24	16	2		
				22	2		
				12	1		
18	+0.102 +0.032	20	26	17	1		
				20	1		
				22	2		
				24	2		
				22	2		
				24	2		
20	+0.124 +0.040	22	25	15	1.5		
				11.5	1.5		
				16.5	1.5		
				21.5	1.5		
				25	1.5		
				15	2		
		23	+0.104 +0.020	23	30	22	2
						20	2
						15	2
						20	2
						27	32
						25	20
22	+0.124 +0.040	25	33	11.5	1.5		
				11.5	1.5		
				16.5	1.5		
				21.5	1.5		
				22	2		
				32	2		
25	+0.104 +0.02	28	35	20	2.5		
				25	2.5		
				4	1		
				9	2		
				16	2		
				26	2		
30	+0.124 +0.040	34	42	32	2		
				37	2		
				18	2		
				22	2		
				32	2		
				37	2		
32	+0.05/+0.15	36	40	16	2		

7021~7024

Standard Specifications 标准规格



d ₁ [mm]	d ₁ - 公差 [mm]	d ₂ [mm]	d ₃ [d13] [mm]	L[h13] [mm]	t _{0.14} [mm]
32	+0.150 +0.050	36	40	26	2
35		+0.025/+0.125	39	47	16
	50			22	2
40	+0.150 +0.050	44	52	30	2
			55	40	2
45	+0.150 +0.050	50	58	17	2
				25	2
				45	2
50	+0.150 +0.050	55	63	50	2
				45	2.5
				20	2
				30	2

d ₁ [mm]	d ₁ - 公差 [mm]	d ₂ [mm]	d ₃ [d13] [mm]	L[h13] [mm]	t _{0.14} [mm]
50	+0.150 +0.050	55	63	40	2
				50	2
	+0.125 +0.025	65	20.5	2.5	
60	+0.06/+0.18	65	73	60	2
65	+0.03/+0.15	70	80	60	2.5
70	+0.060/+0.180	75	83	50	2
75	+0.150 +0.030	80	90	25	2.5
				40	2.5
90	+0.036/+0.176	95	110	50	2.5
120	+0.072/+0.212	125	140	50	2.5

*d₁ 公差为压入标准 H7 座孔 (ISO3547-1) 后公差

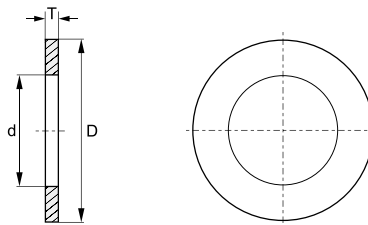


Order 订购

Catalog No. 目录号

d	L
7021	. 008 . 010 -F
7022	. 008 . 010 -F
7023	. 008 . 010 -F
7024	. 008 . 010 -F

垫片



d ^{+0.25} [mm]	D _{-0.25} [mm]	T _{-0.05} [mm]
5	9	0.6
6	15	1.5
6	20	1.5
8	15	0.5
8	15	1.5
8	18	1.0
8	18	1.5
10	18	1.0
10	18	1.5
10	18	2.0
10	24	1.5
12	24	1.5
12	26	1.5
14	26	1.5
14	30	1.5
15	24	1.5
16	30	1.5
16	32	1.5
18	32	1.5
18	36	1.5

d ^{+0.25} [mm]	D _{-0.25} [mm]	T _{-0.05} [mm]
20	30	1.5
20	36	1.5
20	38	1.5
22	38	1.5
22	42	1.5
24	42	1.5
24	44	1.5
25	48	1.5
26	44	1.5
28	48	1.5
30	54	1.5
32	54	1.5
36	62	1.5
38	62	1.5
42	66	1.5
46	74	2.0
48	74	2.0
51	78	2.0
52	78	2.0
62	90	2.0



Order 订购

Catalog No. 目录号

d	D	T
7021	. 010 . 018 . 001.0 -W	
7024	. 010 . 018 . 001.0 -W	