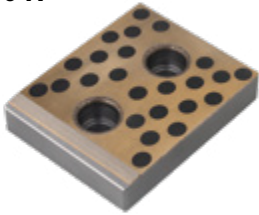


2710-A
2710-B
2810-C

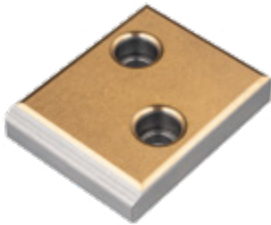
Composite self-lubricating guide plate, VDI 3357
复合型自润滑滑板, VDI 3357



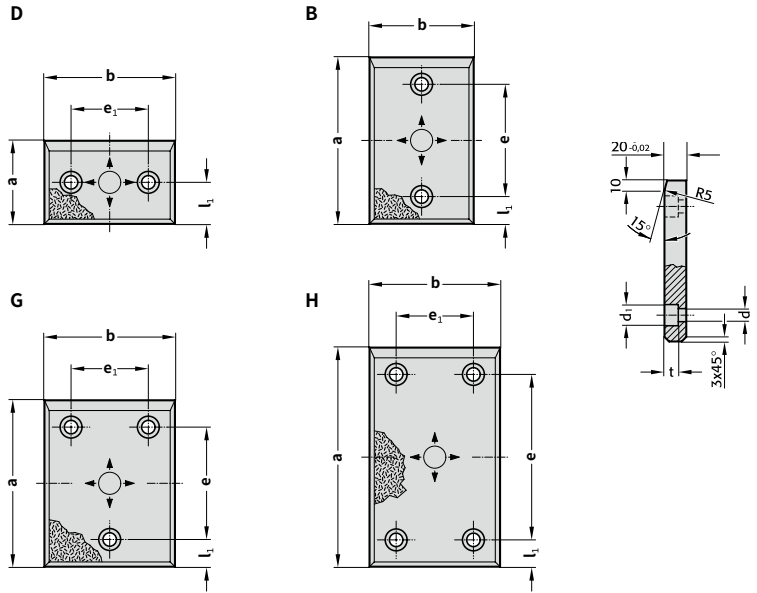
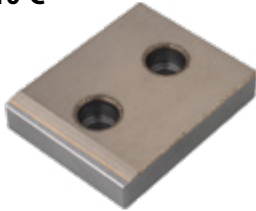
2710-A



2710-B



2810-C



Material: 材料:

2710-A: 钢铸高力黄铜 + 固体润滑剂 (镶嵌型) Steel cast CuZn25Al5Fe3Mn3 + solid lubricant (set type)

2710-B: 钢烧结铜合金 + 固体润滑剂 (弥散型) Steel sintered copper alloy + solid lubricant (dispersion type)

2810-C: 钢烧结铁镍合金 + 固体润滑剂 (弥散型) Steel sintered iron-nickel alloy + solid lubricant (dispersion type)

2710-A/2710-B/2810-C. Composite self-lubricating guide plate, VDI 3357

2710-A/2710-B/2810-C. 复合型自润滑滑板, VDI 3357

形状	b	a	l1	e	e1	d	d1	t	螺栓孔数量
B	50	80	25	30	-	9	15	9	2
B	50	100	25	50	-	13.5	20	13	2
B	50	125	25	75	-	13.5	202	13	2
B	50	160	25	110	-	13.5	20	13	2
B	50	200	25	150	-	13.5	20	13	2
D	80	50	25	-	30	9	15	9	2
B	80	80	25	30	-	13.5	20	13	2
B	80	100	25	50	-	13.5	20	13	2
B	80	125	25	75	-	13.5	20	13	2
B	80	160	25	110	-	13.5	20	13	2
B	80	200	25	150	-	13.5	20	13	2
B	80	250	40	170	-	13.5	20	13	2
B	80	315	40	235	-	13.5	20	13	2
D	100	50	25	-	50	13.5	20	13	2
D	100	80	40	-	50	13.5	20	13	2
B	100	100	25	50	-	13.5	20	13	2
B	100	125	25	75	-	13.5	20	13	2
B	100	160	25	110	-	13.5	20	13	2
B	100	200	25	150	-	13.5	20	13	2

2710-A/2710-B/2810-C. Composite self-lubricating guide plate, VDI 3357

2710-A/2710-B/2810-C. 复合型自润滑滑板, VDI 3357

形状	b	a	l1	e	e1	d	d1	t	螺栓孔数量
B	100	250	40	170	-	13.5	20	13	2
B	100	315	40	235	-	13.5	20	13	2
D	125	50	25	-	75	13.5	20	13	2
D	125	80	40	-	75	13.5	20	13	2
G	125	100	25	50	75	13.5	20	13	3
G	125	125	25	75	75	13.5	20	13	3
G	125	160	25	110	75	13.5	20	13	3
G	125	200	25	150	75	13.5	20	13	3
G	125	250	40	170	75	13.5	20	13	3
G	125	315	40	235	75	13.5	20	13	3
D	160	50	25	-	110	13.5	20	13	3
D	160	80	40	-	110	13.5	20	13	3
G	160	100	25	50	110	13.5	20	13	3
G	160	125	25	75	110	13.5	20	13	3
G	160	160	25	110	110	13.5	20	13	3
G	160	200	25	150	110	13.5	20	13	3
H	160	250	40	170	110	13.5	20	13	4
H	160	315	40	235	110	13.5	20	13	4



Order 订购

Catalog No. 目录号

2710	.	50	.	80	-	A
2710	.	50	.	80	-	B
2810	.	50	.	80	-	C