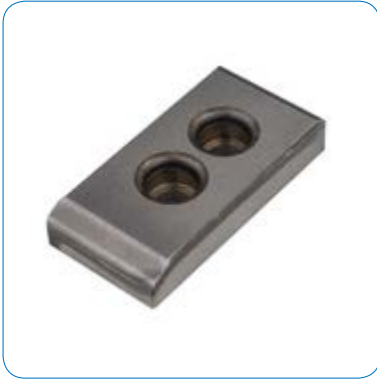
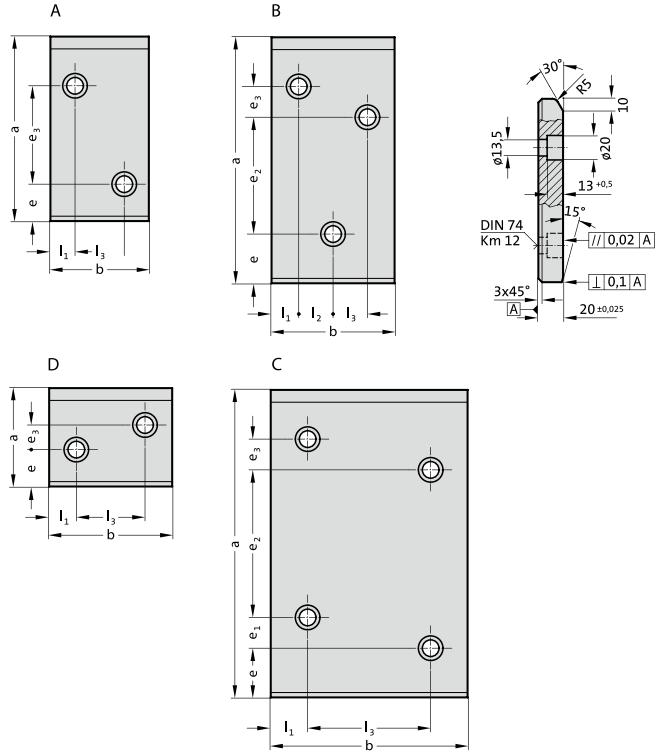


# 2510

## Steel guide plate, NAAMS 钢导板, NAAMS



2510.



**Material: 材料:**

Steel 钢

**Description 说明:**

表面高频处理 Surface high frequency processing

硬度 Hardness: 55~60HRC

2510. Steel guide plate, NAAMS  
2510. 钢导板, NAAMS

形状	b	a	l1	l2	l3	e	e <sub>1</sub>	e <sub>2</sub>	e <sub>3</sub>	螺栓孔数量
A	50	100	25	-	-	30	-	-	30	2
A	50	150	25	-	-	30	-	-	80	2
A	50	200	25	-	-	40	-	-	120	2
A	80	100	20	-	40	30	-	-	30	2
A	80	150	20	-	40	30	-	-	80	2
A	80	200	20	-	40	40	-	-	120	2
A	80	250	20	-	40	40	-	-	170	2
B	80	315	20	20	20	40	-	210	25	3
D	100	50	22	-	56	14	-	-	13	2
D	100	80	22	-	56	30	-	-	20	2
A	100	100	22	-	56	30	-	-	30	2
A	100	150	22	-	56	30	-	-	80	2
B	100	200	22	28	28	40	-	95	25	3

2510. Steel guide plate, NAAMS  
2510. 钢导板, NAAMS

形状	b	a	l1	l2	l3	e	e <sub>1</sub>	e <sub>2</sub>	e <sub>3</sub>	螺栓孔数量
B	100	250	22	28	28	40	-	145	25	3
B	100	315	22	28	28	40	-	210	25	3
D	125	80	25	-	75	30	-	-	20	2
A	125	100	25	-	75	30	-	-	30	2
A	125	150	25	-	75	30	-	-	80	2
B	125	200	25	37	38	40	-	91	25	3
B	125	250	25	37	38	40	-	145	25	3
C	125	315	25	-	75	40	25	165	25	4
A	160	100	30	-	100	30	-	-	30	2
A	160	150	30	-	100	30	-	-	80	2
B	160	200	30	50	50	40	-	95	25	3
C	160	250	30	-	100	40	25	120	25	4
C	160	315	30	-	100	40	25	185	25	4



Order 订购

Catalog No. 目录号

b

a

厚度

2510

050

100

020