

# 7021~7024

## Standard Specifications 标准规格



d <sub>1</sub> [mm]	d <sub>1</sub> - 公差 [mm]	d <sub>2</sub> [mm]	d <sub>3</sub> [d13] [mm]	L[h13] [mm]	t <sub>0.14</sub> [mm]
32	+0.150 +0.050	36	40	26	2
35		+0.025/+0.125	39	47	16
	50			26	2
40	+0.150 +0.050	44	52	30	2
			55	40	2
45	+0.150 +0.050	50	58	17	2
			60	25	2
50	+0.150 +0.050	55	63	45	2
				50	2
				45	2.5
				20	2
				30	2

d <sub>1</sub> [mm]	d <sub>1</sub> - 公差 [mm]	d <sub>2</sub> [mm]	d <sub>3</sub> [d13] [mm]	L[h13] [mm]	t <sub>0.14</sub> [mm]
50	+0.150 +0.050	55	63	40	2
				50	2
				50	2
				65	2.5
60	+0.06/+0.18	65	73	60	2
65	+0.03/+0.15	70	80	60	2.5
70	+0.060/+0.180	75	83	50	2
75	+0.150 +0.030	80	90	25	2.5
				40	2.5
90	+0.036/+0.176	95	110	50	2.5
120	+0.072/+0.212	125	140	50	2.5

\*d<sub>1</sub> 公差为压入标准 H7 座孔 (ISO3547-1) 后公差

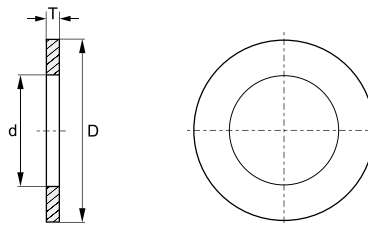


Order 订购

Catalog No. 目录号

d	L
7021	. 008 . 010 -F
7022	. 008 . 010 -F
7023	. 008 . 010 -F
7024	. 008 . 010 -F

垫片



d <sup>+0.25</sup> [mm]	D <sub>-0.25</sub> [mm]	T <sub>-0.05</sub> [mm]
5	9	0.6
6	15	1.5
6	20	1.5
8	15	0.5
8	15	1.5
8	18	1.0
8	18	1.5
10	18	1.0
10	18	1.5
10	18	2.0
10	24	1.5
12	24	1.5
12	26	1.5
14	26	1.5
14	30	1.5
15	24	1.5
16	30	1.5
16	32	1.5
18	32	1.5
18	36	1.5

d <sup>+0.25</sup> [mm]	D <sub>-0.25</sub> [mm]	T <sub>-0.05</sub> [mm]
20	30	1.5
20	36	1.5
20	38	1.5
22	38	1.5
22	42	1.5
24	42	1.5
24	44	1.5
25	48	1.5
26	44	1.5
28	48	1.5
30	54	1.5
32	54	1.5
36	62	1.5
38	62	1.5
42	66	1.5
46	74	2.0
48	74	2.0
51	78	2.0
52	78	2.0
62	90	2.0



Order 订购

Catalog No. 目录号

d	D	T
7021	. 010 . 018 . 001.0 -W	
7024	. 010 . 018 . 001.0 -W	