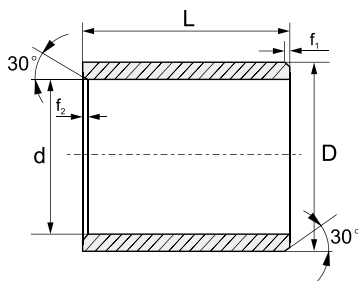


直套



推荐安装公差座孔 : H7  
轴 : h9

d	f <sub>1</sub>	f <sub>2</sub>
1-6	0.3	0.5
6-12	0.5	
12-30	0.8	
>30	1.2	

d [mm]	d- 公差 [mm]	D [mm]	L(h13) [mm]
3	+0.054 +0.014	4.5	3
		4.5	5
		4.5	6
		5	5
4		5.5	4
		5.5	6
		5.5	8
5	+0.068 +0.020	6	6
		7	5
		7	8
		7	10
6		7	12
		7	18
		8	4
		8	5
		8	6
		8	8
		8	10
8	+0.083 +0.025	8	11
		10	5
		10	6
		10	8
		10	10
		10	11
		10	12
		10	15
		11	10
		12	10
9	11	6	
10		12	4
		12	5
		12	6
		12	8
		12	10
		12	12

d [mm]	d- 公差 [mm]	D [mm]	L(h13) [mm]
10	+0.083 +0.025	12	15
		14	10
		14	16
		12	18
		12	20
12		14	6
		14	8
		14	10
		14	12
		14	15
		14	20
		14	25
		14	30
13		15	20
		16	12
		15	7
14	+0.102 +0.032	15	10
		16	8
		16	10
		16	12
		16	15
		16	20
		16	25
15		17	10
		17	12
		17	15
		17	17
		17	20
		17	25
		17	25
16		18	10
		18	12
		18	15
		18	20
		18	25
		+0.015/+0.055	19

d [mm]	d- 公差 [mm]	D [mm]	L(h13) [mm]
16	+0.102 +0.032	20	16
18		20	15
		20	20
		20	25
20	+0.124 +0.040	22	12
		22	15
		22	28
		23	10
		23	15
		23	20
		23	23
		23	25
		25	15
		25	15
22	+0.124 +0.040	25	20
		25	25
		25	30
25	+0.124 +0.040	28	10
		28	12
		28	15
		28	20
		28	25
		28	30
28	+0.124 +0.040	29	25
		30	25
		32	20
30	+0.124 +0.040	32	25
		32	30
		34	20
		34	25
		34	30
		34	40

d [mm]	d- 公差 [mm]	D [mm]	L(h13) [mm]
32	+0.150 +0.050	36	20
		36	23
		36	25
		36	30
		36	40
35	+0.150 +0.050	39	15
		39	20
		39	25
		39	30
		39	40
		39	50
40	+0.150 +0.050	44	20
		44	30
		44	40
45	+0.150 +0.050	44	50
		50	30
		50	40
50	+0.150 +0.050	50	50
		55	10
		55	20
		55	30
		55	40
54	+0.180 +0.060	55	50
60		65	50
70		75	50
80	+0.072/+0.212	85	40
85		90	40
125	+0.143	130	60
150	+0.043	155	60

\*d 公差为压入标准 H7 座孔 (ISO3547-1) 后公差

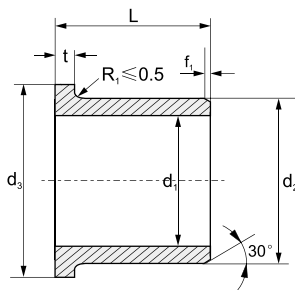


Order 订购

Catalog No. 目录号

7021 . 008 . 010 . 010  
7022 . 008 . 010 . 010  
7023 . 008 . 010 . 010  
7024 . 008 . 010 . 010

翻边轴套



推荐安装公差座孔 : H7  
轴 : h9

d	f
1-6	0.3
6-12	0.5
12-30	0.8
>30	1.2